

MEMBERS REWARDS

READY FOR YOUR
OPPORTUNITY TO SHINE?



MEMBERS REWARDS IS THE NEW MEMBER
REWARD PROGRAM AT CASTLE HILL RSL
WHERE YOUR LOYALTY IS REWARDED WITH:

- DISCOUNTS
- SPECIAL PROMOTIONS
- IN HOUSE PURCHASES
- EXCLUSIVE EVENTS AND MORE!

*It's our way of saying "thank you" for
your loyalty to Castle Hill RSL Club.*

*More rewards, more fun and
more ways to win.*

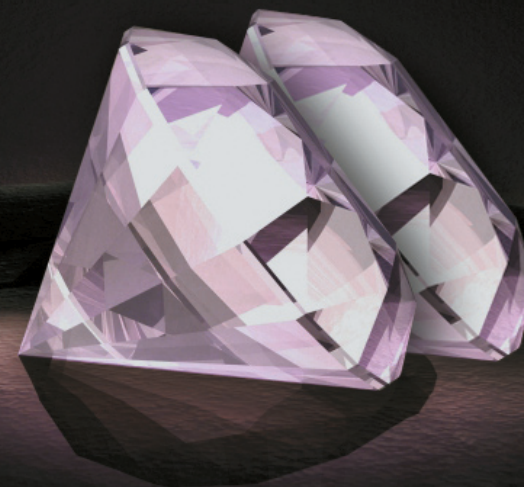
*A whole new world of rewards
and benefits awaits!*



CASTLE HILL RSL CLUB
77 CASTLE STREET, CASTLE HILL NSW 2154
PHONE: (02) 8858 4800 FAX: (02) 8858 4811
WWW.CASTLEHILLRSL.COM.AU

MEMBERS REWARDS

YOUR OPPORTUNITY TO SHINE



MEMBERS REWARDS

CASTLE HILL RSL GROUP MEMBERS REWARDS

	SAPPHIRE 	RUBY 	EMERALD 	DIAMOND 	DOUBLE DIAMOND 
Birthday Card	\$	\$	\$\$	\$\$\$	\$\$\$\$
Discounted Food & Beverage	✓	✓	✓	✓	✓
Utility-Bill Payment Service	✓	✓	✓	✓	✓
Additional Monthly Bonus Points		10%	15%	25%	50%
1 week Presale to In-house Shows			✓	✓	✓
Discounted In-house Show Tickets			25% OFF	50% OFF	FREE
C2K Membership Discounts			25% OFF	50% OFF	FREE
Gaming Snack Menu Discounts			25% OFF	FREE	FREE
Preferred Seating at In-house Shows & Events				✓	✓
Discounted Conference & Event Bookings				✓	✓
VIP Invites to Off-Site Events				✓	✓
Annual Celebration Dinner plus \$25K giveaway				✓	✓
Personalised Executive Hosting Service					✓
Non-Expiration of Reward Points					✓
Invitation to Exclusive Double Diamond Events					✓
VIP Reserved Car Parking					✓

MEMBERS REWARDS FREQUENTLY ASKED QUESTIONS

HOW DOES MEMBERS REWARDS WORK?

Members Rewards provides additional rewards for Castle Hill RSL Club Members who correctly use their membership card for all: Gaming, Food & Beverage, Show Tickets, Events, C2K and Bottle Shop.

The Members Rewards Program revolves around a system of tiering.

The more points you earn on your card, the higher the level that you can achieve. Rewards are offered to Members based on their level.

HOW MANY LEVELS ARE THERE?

There are 5 member levels in Members Rewards and each tier offers special benefits:

- Sapphire
- Ruby
- Emerald
- Diamond
- Double Diamond.

HOW DO I KNOW WHAT LEVEL I'M IN?

When you insert your card in a gaming machine, a letter will be displayed after your name (in brackets), this is the first letter of the level you are in. Double Diamond Members have the symbol *. Alternately when you swipe your card in one of our Members Rewards terminals the level you are in will be displayed.

HOW CAN I GO UP A LEVEL?

On the 8th of each month we will move Members up to the level that they qualify for, based on the points they have earned on their member card. On average, \$1 spent will earn you one point at point of sale. \$10 turnover = 1 cent in Gaming. 1 point = 1 cent. So 1000 points = \$10.00.

THE GREATER THE POINTS, THE GREATER THE REWARDS!

CAN I BE MOVED DOWN LEVELS?

Yes, but unlike moving up in levels, this will be reviewed every 6 months on the 1st April and 1st October. Once you reach a level you will not move down, until the next review date.

DO MEMBERSHIP POINTS EXPIRE?

Yes*, at the close of business on 30th June each year your membership points will expire and become zero (0). With the exception of Double Diamond members.

HOW CAN I USE MY POINTS?

You can use your points to make purchases within Castle Hill RSL Club as well as gift vouchers or depending on your level other items. Points can not be exchanged for cash.

WHAT IF I DON'T WANT TO BE A PART OF THE SYSTEM?

If you do not wish to participate tell us and we will ensure you remain in the Sapphire level.

POINTS TO NOTE:

- * You must be a financial member of Castle Hill RSL Club to qualify for Members Rewards.
- * Castle Hill RSL Club Members can have only one card at a time and Members are not allowed to allow other persons to use their card. This will result in disciplinary action.
- * Members whose membership is put on hold, cancelled or suspended will have their points frozen and possibly removed.
- * You must use your Castle Hill RSL Member card when making purchases or playing machines, as your points determine the level you are on.
- * Points are not transferrable to other Members, nor can they be exchanged for cash.
- * Rewards are subject to change at the Club's discretion.
- * At the time of print, Double Diamond Member's points will not expire.